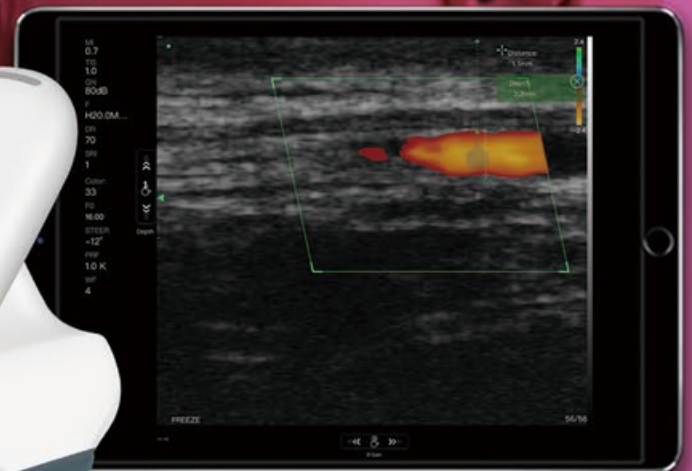


HANDHELD

**Ultrasonograf
Kosmetologiczny**



Facial ultrasound

18/24Mhz 16/20Mhz

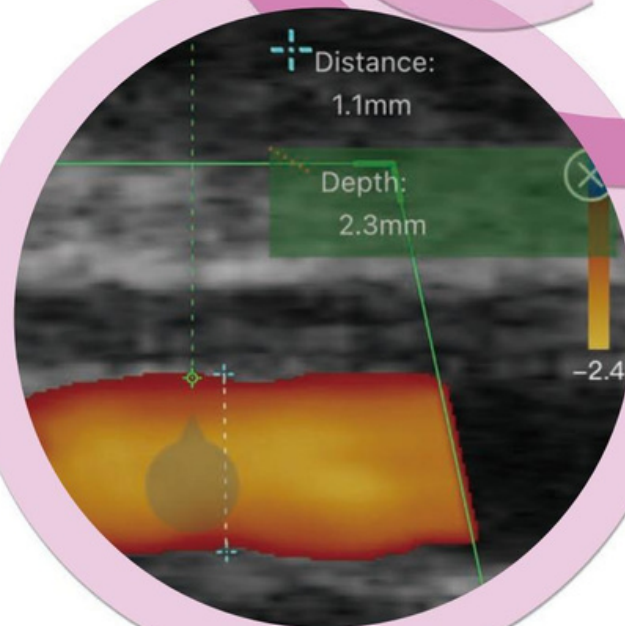
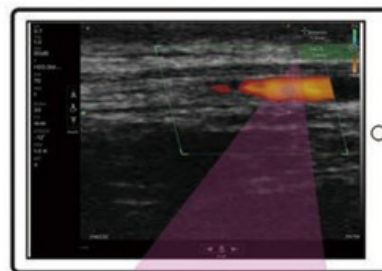
C10MR

C10MB

A more reassuring choice **C10MR**

- ◆ **Lighter and smaller**
Only 155g easy to carry.
- ◆ **Full waterproof design**
IPX8 convenient for sterilization.
- ◆ **USB&WiFi two connections**
Support working while charging.
- ◆ **Free App, no membership fee**
Support IOS/Android/Windows.
- ◆ **Built-in cooling coating**

You can scan the blood vessels with a diameter of 1mm at a depth of 1-25mm subcutaneous in the face. Faster, easier and accurate.



Ultrasound-guided Filler Injections

Mapping & Injecting

Provide injections as safely as possible by knowing how deep each blood vessel is with a great certainty.

Evaluating Fillers

Ultrasound can scan the product that has been injected in the past. The product can sometimes cause prolonged swelling or irregularities in the skin. When doctors need to dissolve the injected material, the ultrasound can help them inject hyaluronidase (used to dissolve fillers) precisely. Can help optimize the treatment and dissolve the filler.

The C10MR can be used for all injections in the area of face and neck, including (but not limited to) Botox, lip injections, liquid rhinoplasty, Kybella fat reduction, chin/jawline filler, undereye filler and nasolabial fold filler.



Software Feature

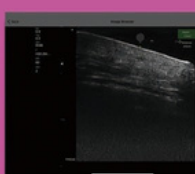
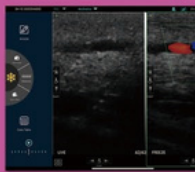
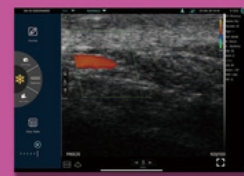
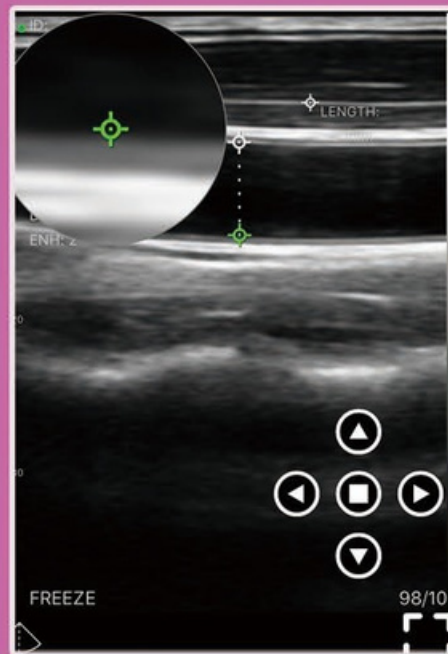
Download the "MY USG" APP from the App Store or Google Play for free



- ✓ Support Dicom
- ✓ Report edit/print
- ✓ Free app & updates, Unlimited users
- ✓ Horizontal&Vertical Screen display
- ✓ Dual-screen display in different modes

Measure Magnify

The boundary of the target area can be marked more accurately.



Probe Specs

Model: C10MR
Frequency: 18/24Mhz
Scan Depth: 1-25mm
Model: C10MB
Frequency: 16/20Mhz
Scan Depth: 10-40mm
Elements: 192
Mode:
B.B+M.Color.PW. PDI
Channel: 64
Waterproof: IPX8

Size

Dimensions:
155x65x25mm
Weight: 155g
Footprints: 18*5 mm(MR)
Footprints: 24*6 mm(MB)

Adjustable Parameters

B/Color GN(Gain)
D(Depth)
ENH(Enhancement)
DR(Dynamic Range)
H(harmonic)
Focus
8 TGC
Mid-Line
An note
Biopsy Puncture
Page Left/Right Up/Down

Image Management

JPEG, MP4, Dicom
Save&Share
image/video/report

Connection (USB&WiFi)

WiFi:
802.11n/20MHz/2.4G/5G

System:
Android. IOS. Windows

Device:
Android :Tablet/Phone/TV

IOS :Ipad/iPhone (only WiFi)
Windows PC

Battery Charge

Capacity: 2200 mAh
Working time: 3h
48h Ultra-long standby
Recharge time: 2~3h by
USB cable or wireless charging



MedicalSPOT

Tel.+48 690 486 043

Mail:kontakt@medicallspot.pl

Web: www.medicallspot.pl

Ul.Pomarańczowa 9 Poznań 61-612 Poland NIP 781 124 45 09

